

House & Land package.

Tamar 205.



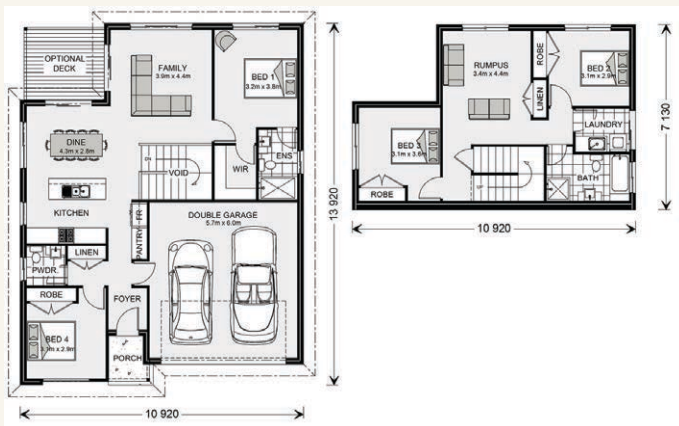
Total H&L package \$587,000*

Beach Facade | Includes standard site costs

Land: Lot 104 Regatta Close, Teralba

Package includes^

- + Caesar stone kitchen bench tops
 - + Floor coverings (tiles and carpet)
 - + Coloured concrete driveway
 - + Colorbond roof
 - + Turf to front yard
 - + BAL12.5 bushfire requirements
- ^Please see the website for a full list of inclusions.



Tamar 205 SL.



Itemised Floor Areas	Area
GF Internal	68.3sqm
UF Internal	97.6sqm
Garage	37.4sqm
Porch	3.6sqm
Gross Floor Area	206.9sqm

Drop in for a chat today.

G.J. Gardner Newcastle.

154 Hannell Street,
Wickham NSW 2293

Contact Alan Hubber.

Call **0418 618 238**

email alan.hubber@gjgardner.com.au

or visit gjgardner.com.au

Terms & conditions *Package price is correct as of 15/04/16 and is based on standard home, standard façade and builders preferred siting. House price package may be subject to developers design review panel, council final approval and G.J. Gardner Homes procedure of purchase. Prices are GST inclusive and may change without notice. Package subject to two separate contracts. Images may depict fixtures, finishes and features not supplied by G.J. Gardner Homes, these items include planter boxes, retaining walls, water features, pergolas, screens and decorative landscaping items such as fencing and outdoor kitchens and barbeques. For detailed home pricing, please talk to a sales consultant. This design and illustration remains the property of G.J. Gardner Homes and may not be reproduced on whole or in part without written consent. Mark Eddy Building Pty Ltd T/As G.J. Gardner Homes Newcastle. Builders licence 106600C.

Welcome **home.**

G.J. Gardner. HOMES