

House & Land Package



Image for illustration purposes only

4 2 2

Living Area: 190.4m²

Garage: 37.2m²

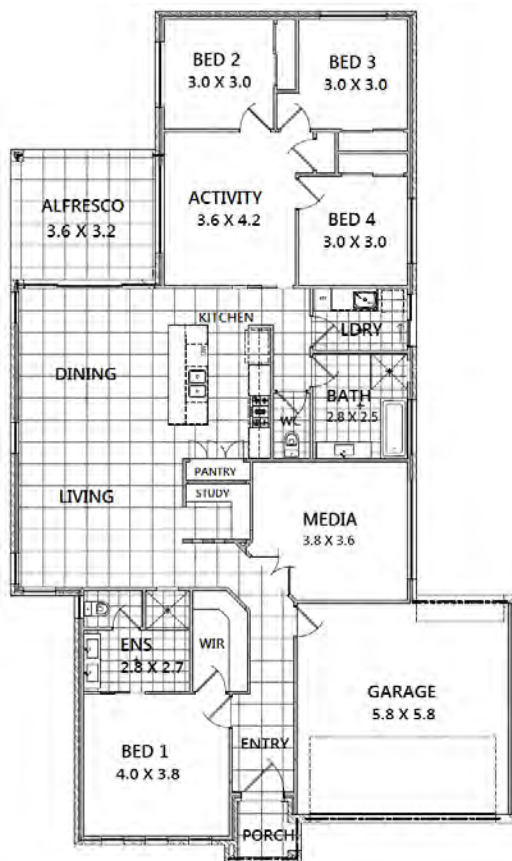
Alfresco: 14.3m²

Porch: 2.7m²

TOTAL: 244.6m²

Width: 13.91m

Depth 23.40m



CLASSIC TURN-KEY PACKAGE!!!
Stage 6 - Billy's Lookout - Lot 603

Features

- ✓ GR Homes Classic Inclusions
- ✓ 20mm Silestone® engineered quartz kitchen benchtops
- ✓ Polytec melamine kitchen cupboard doors
- ✓ 600mm Westinghouse appliances
- ✓ Wall hung vanities & built-in bath
- ✓ Remote controlled front garage door
- ✓ Ceramic floor tiles to living areas
- ✓ Carpet to bedrooms, robes, activity & media room
- ✓ Ceramic tiles to Alfresco & Porch
- ✓ Kikuyu turf
- ✓ Ducted Air Conditioning
- ✓ R1.5 wall insulation with R3.0 ceiling insulation
- ✓ Colorbond roof with sarking
- ✓ PGH face bricks
- ... plus many more quality inclusions

Land: \$ 305,000.00inc

House: \$ 359,560.00inc

TOTAL: \$ 664,560.00inc

GR HOMES

**Quality People,
Building Quality Homes**

7-9 Bruncker Road
Broadmeadow NSW 2292
P 4978 8400 F 4978 8401

E enquiries@grhomes.builders
www.grhomes.builders

Created: 2nd May 2017

Terms & Conditions* Package price is based on a standard home and standard façade. House price package may be subject to lot constraints, developers design review panel, Council final approval and GR Homes procedure of purchase. Turnkey items such as fencing, driveway, paths, turf, landscaping, letterbox & clothesline are not included, price on application if requested. Prices are GST inclusive and may change without notice. Images may depict fixtures, finishes and features not supplied by GR Homes. These items include planter boxes, retaining walls, water features, pergolas, screens and decorative landscaping items such as fencing and outdoor kitchens and barbeques etc. For detailed home pricing and inclusions, please talk to our sales consultant. This design and illustration remains the property of GR Homes and may not be reproduced in whole or in part without consent. Proudly built by Edgeworth Constructions Pty Ltd. Builders Licence #204959C.