



HOUSE AND LAND PACKAGE



LOT 701
FISHERMANS DRIVE,
TERALBA, BILLY'S
LOOKOUT

Coogee 184 | Executive



4 beds



2 baths



1 parks



19.6 squares



8.7m wide

LOT SIZE: 438m²

\$564,488

including land \$250,000

This house and land package includes:

- 4 Star Designer Essentials inclusions
- BASIX requirements including water tank
- Standard site costs
- Termite resistant frames and trusses
- Sarking under roof tiles
- Large double garage with remote control door
- Flyscreens to all windows and sliding doors
- Iive stainless steel appliance package
- Ducted Daikin air conditioning
- Coloured concrete driveway
- Alfresco roof and coloured concrete base
- Light fittings, communication point inc. supply and instillation
- Ceramic floor tiling to all living areas
- High quality carpet to all bedrooms
- Taubmans Three Coat Premium Paint System to internal walls
- Elite Stoneware Classic pre-fab letter box
- Kikuyu turf, supplied & laid to front yard & Council crossing (including soil, fertiliser and machine hire)





Coogee 184 Metro

montgomeryhomes.com.au



LOT 701
FISHERMANS DRIVE,
TERALBA, BILLY'S
LOOKOUT



4 beds



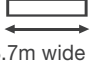
2 baths



1 parks



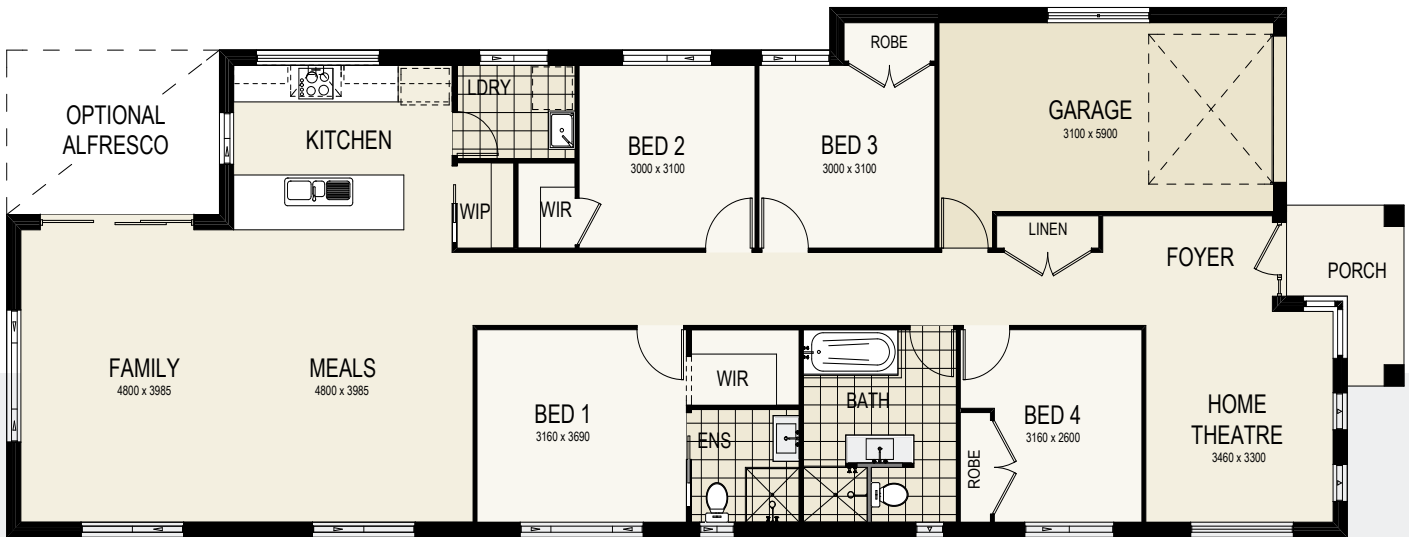
19.6 squares



8.7m wide

TOTAL FLOOR AREA
19 squares or 181m²

LOT SIZE
438m²



For more information, please contact:

Thomas Wenham
0422 386 073

thomas@montgomeryhomes.com.au

CONDITIONS APPLY Please note that this is not a final tender and Montgomery Homes reserves the right to revise plans, pricing & all specifications without obligation or notice. Pricing is subject to Council & any other statutory or regulatory authority requirements (Eg. BASIX, Mines, Bushfire etc). Designs and plans are Copyright protected and remain the property of Montgomery Homes Pty Ltd at all times. Pictures shown are for illustrative purposes only. Price excludes any external works i.e. landscaping, driveway, retaining walls & excludes floor coverings to living areas & bedrooms etc, window furnishings & light fittings.



montgomeryhomes.com.au

