

# HOME PACKAGE

AVAILABLE ON YOUR OWN LAND

Or we can find the land for you

# \$336,993

## PROTEA 29 DELUXE

Daydream Facade

269.90m<sup>2</sup>

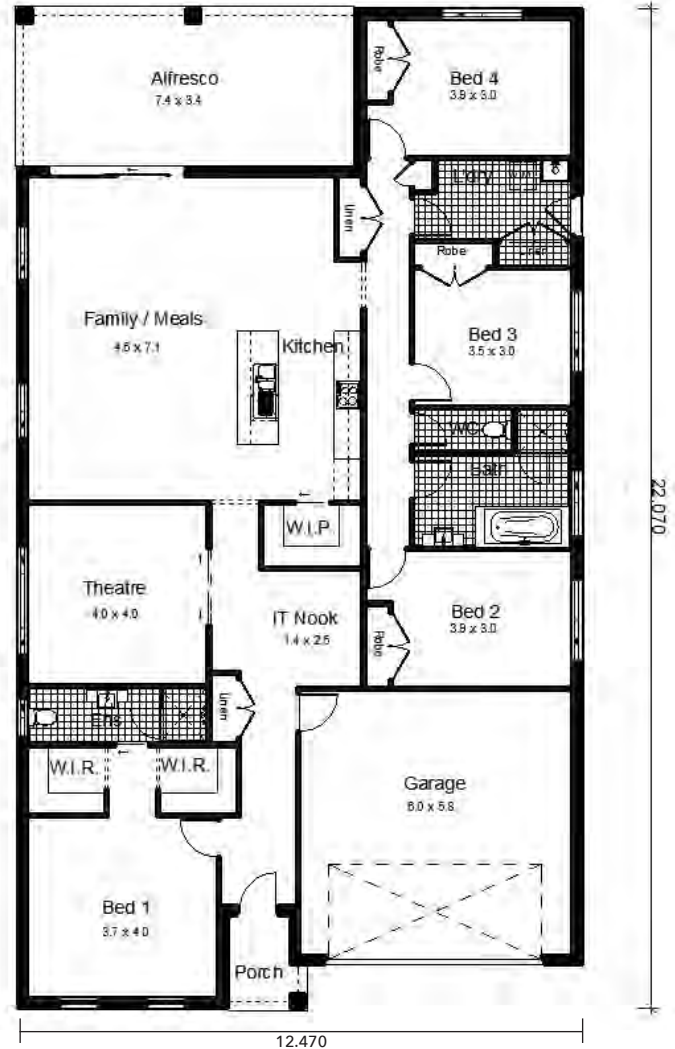


# HOME PACKAGE

## AVAILABLE ON YOUR OWN LAND

### PACKAGE INCLUDES:

- Provisional Site Costs, BASIX, and Council Costs
- Truecore Steel Frame & Trusses
- Termimesh Pest Control
- Colorbond Roof with Anticon Blanket
- Flyscreens to all Windows
- Flydoors to All Sliding Doors
- Actron Ducted Air Conditioning
- 900mm Westinghouse Appliances- Cooktop, Oven, Rangehood, Microwave
- Stainless Steel Dishlex Dishwasher
- 20mm Caesarstone Benchtops to Kitchen with Waterfall Ends to Island
- Floor Coverings (Carpet & Tiles)
- Concrete Driveway
- Hume 1200mm Stained Entrance Door
- Alfresco with Concrete Slab
- Overhead Cupboards with Sheen Finish
- Automatic Sectional Panelift Colorbond Garage Door with 2 Remotes
- Personal Colour Consultation
- PGH Certified Brick Cleaning
- **Plus many more quality inclusions!**



**House too big or small?**

**Don't like the facade?**

We can change these things to suit your needs. Contact us today.

### CONTACT:

**Jackie Barton** - Sales Consultant (Harvest Boulevard, Chisholm)

Phone: (02) 4046 9832 Mobile: 0419 417 755

Email: [jackie@bartletthomes.com.au](mailto:jackie@bartletthomes.com.au)

Web: [www.bartletthomes.com.au](http://www.bartletthomes.com.au)

