



**THE HOBART 250 - MARTIN FACADE**

**BUILDING WITH A DIFFERENCE**

**HOUSE ONLY  
PRICE**

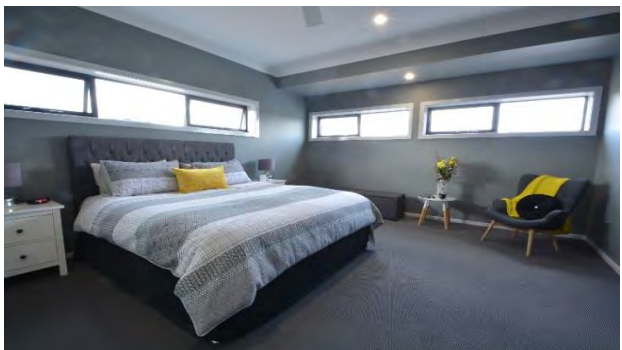
**\$380,212**

**13.5m minimum frontage required**

*\* Above price based on MODERN inclusions UPGRADE, MARTN Facade and additional inclusions below \**

**ADDITIONAL INCLUSIONS**

- Ducted Air Conditioning
- High quality PC items, Light fittings and ceiling fans
- Tiles & Carpet allowance
- Flyscreens for windows & sliding doors
- Fixed Price Contract
- 6 Year structural guarantee
- 2 year non structural guarantee
- 90 day maintenance period



*Martin provide in-house Kitchen, Bathroom & Laundry design*

*Unique design - can be tailored to your taste*

**HOBART 250 FLOORPLAN**  
 Width 11.46m - Length 17.70m



**FOR PACKAGE INFORMATION**  
[www.martinprojecthomes.com](http://www.martinprojecthomes.com)

**CONTACT - Peter Wakeman - MARTIN PROJECT HOMES: 1300 657 487**

Separate land and building contracts. Bundle price excludes costs associated with land purchase (e.g. legal fees, stamp duty, property searches etc.) Prices are based on standard site costs/basis/work cover requirements. Images shown may depict fixtures, finishes & features not supplied by Martin Project Homes, or included in shown price, as they are for illustrative purposes only. Refer to our standard inclusions list for build inclusions. Optional upgrade packages are available at additional costs. Depicted facade may incur additional charges