



HOUSE AND LAND PACKAGE



LOT 1304

STAGE 13, TERALBA,
BILLY'S LOOKOUT

Avalon 211 | Metro



4 beds



2 baths



2 parks



22 squares



12.37m wide

LOT SIZE: 454.9m²

\$627,000

including land \$295,000

This house and land package includes:

- Essentials inclusion range
- BAL Ready
- BASIX requirements including water tank
- Standard site costs
- Termite resistant frames and trusses
- Sarking under roof tiles
- Large double garage with remote control door
- Flyscreens to all windows and sliding doors
- Iive stainless steel appliance package

Additional Bonuses:

- Iive dishwasher
- Stunning Caesarstone® kitchen benchtops
- Ceramic tiling to living areas
- Quality carpet to non-tiled areas
- Supply and installation of light fittings
- Coloured concrete driveway and footpath
- Alfresco entertainment area including slab
- Daikin ducted air conditioning
- Taubmans three coat premium paint system to internal walls
- Topsoil, establishment fertiliser, Kikuyu turf
- Elite Stoneware Classic pre-fab letter box.
- Fibreglass mesh flyscreens to all windows & aluminium sliding doors



montgomeryhomes.com.au





Avalon 211 Metro

montgomeryhomes.com.au



LOT 1304
STAGE 13, TERALBA,
BILLY'S LOOKOUT



4 beds



2 baths



2 parks



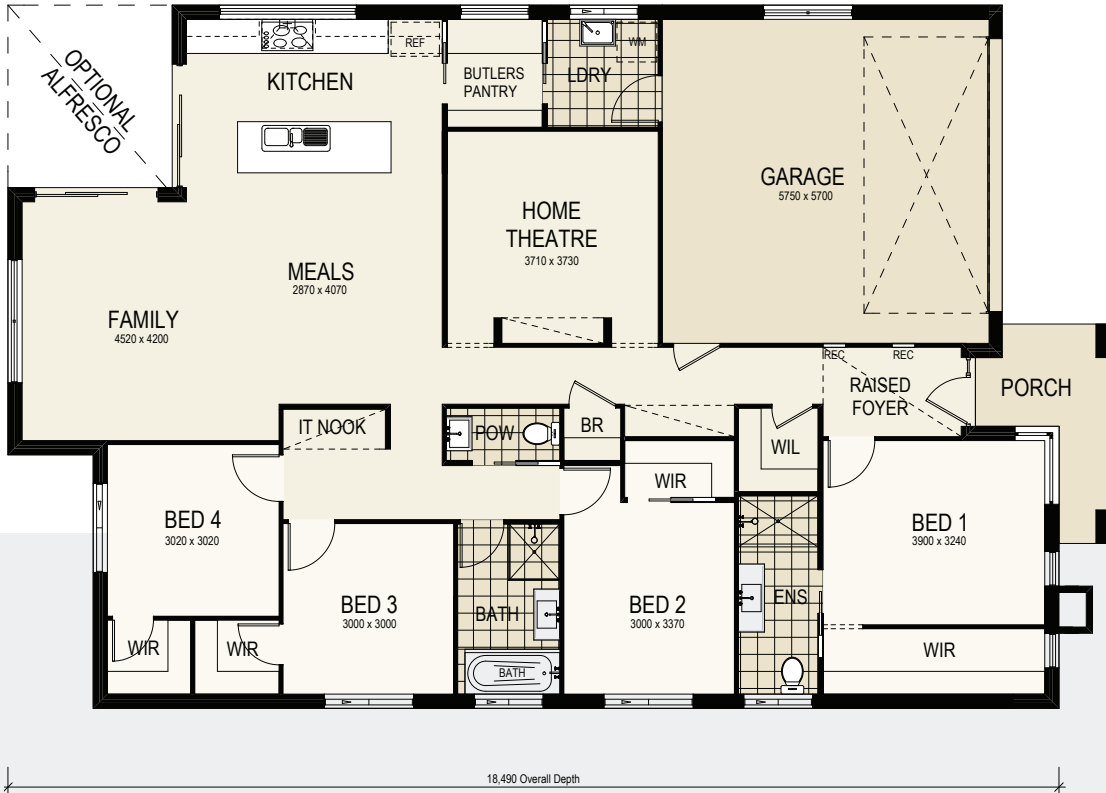
22 squares



12.37m wide

TOTAL FLOOR AREA
22 squares or 207.30m²

LOT SIZE
454.9m²



For more information, please contact:

Thomas Wenham
0422 386 073

thomas@montgomeryhomes.com.au

CONDITIONS APPLY Please note that this is not a final tender and Montgomery Homes reserves the right to revise plans, pricing & all specifications without obligation or notice. Pricing is subject to Council & any other statutory or regulatory authority requirements (Eg. BASIX, Mines, Bushfire etc). Designs and plans are Copyright protected and remain the property of Montgomery Homes Pty Ltd at all times. Pictures shown are for illustrative purposes only. Price excludes any external works i.e. landscaping, driveway, retaining walls & excludes floor coverings to living areas & bedrooms etc, window furnishings & light fittings.



montgomeryhomes.com.au

