



HOUSE AND LAND PACKAGE



LOT 729

FISHERMANS DRIVE, TERALBA,
BILLY'S LOOKOUT

Coolum 263 | Metro



5 beds



2.5 baths



2 parks



28 squares



8.7m wide

LOT SIZE: 325.5m²

\$597,000

including land \$240,000

This house and land package includes:

- Designer Essentials inclusions
- BASIX requirements including water tank
- Standard site costs
- Termite resistant frames and trusses
- Large double garage with remote control door
- Ilve stainless steel appliance package

Additional Bonuses:

- Ilve dishwasher
- Stunning Caesarstone[®] kitchen benchtops
- Taubmans Three Coat Premium Paint System to internal walls
- Quality Assurance (QA) inspection reports by certified outsourced independent building inspectors
- Flyscreens to all windows and sliding doors
- Sarking under roof tiles

TURNKEY OPTION AVAILIABLE





Coolum 263 Metro

montgomeryhomes.com.au



LOT 729

FISHERMANS DRIVE, TERALBA,
BILLY'S LOOKOUT



5 beds



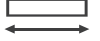
2.5 baths



2 parks



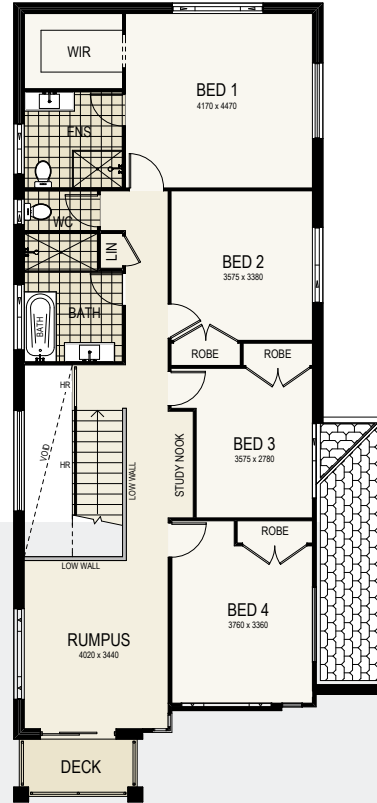
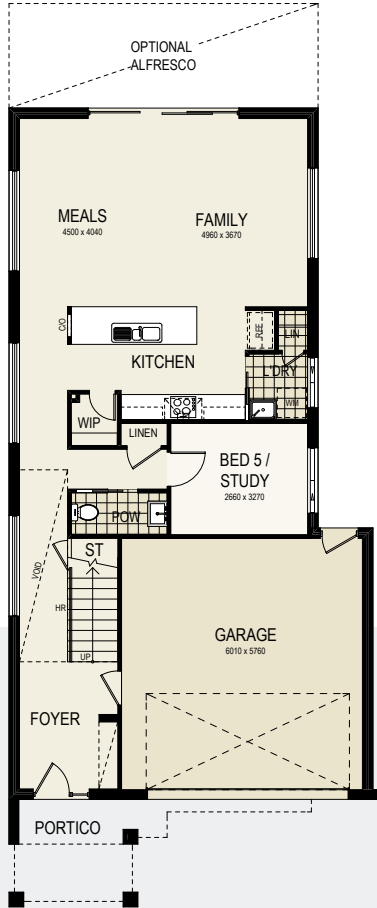
28 squares



8.7m wide

TOTAL FLOOR AREA
28 squares or 260.22m²

LOT SIZE
325.5m²



For more information, please contact:

Thomas Wenham
0422 386 073

thomas@montgomeryhomes.com.au

CONDITIONS APPLY Please note that this is not a final tender and Montgomery Homes reserves the right to revise plans, pricing & all specifications without obligation or notice. Pricing is subject to Council & any other statutory or regulatory authority requirements (Eg. BASIX, Mines, Bushfire etc). Designs and plans are Copyright protected and remain the property of Montgomery Homes Pty Ltd at all times. Pictures shown are for illustrative purposes only. Price excludes any external works i.e. landscaping, driveway, retaining walls & excludes floor coverings to living areas & bedrooms etc, window furnishings & light fittings.



montgomeryhomes.com.au



