

House package only
From \$343,122

Basic house price \$248,401

Valid until 30 June 2019

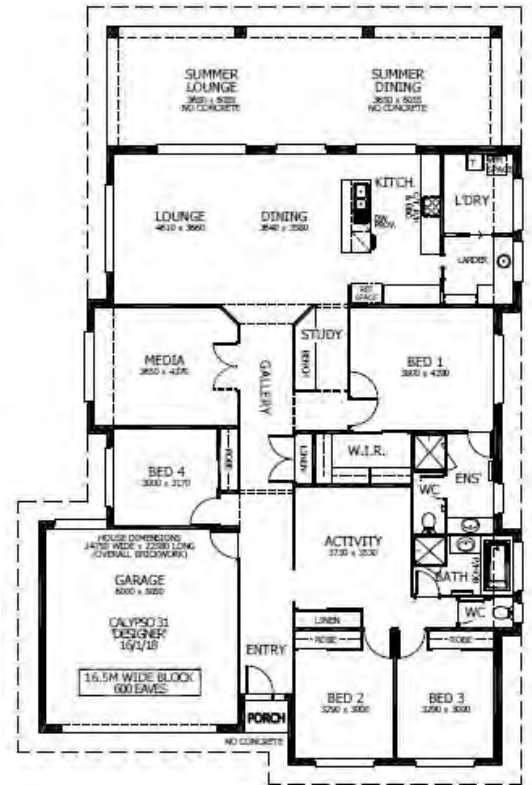


Calypso 31 - Designer

Floor Area: 287.92m² or 30.99sq
 Frontage: 14.75m Depth: 22.580m

Package Inclusions:

- Designer Plus Portico
- Covered Summer Lounge & Dining
- Reconstituted' stone benchtops in Kitchen
- Upgraded Designer Kitchen with Stainless Steel Appliances'
- Fully Ducted Air Conditioning
- Clothesline, letter box & TV Antenna with booster
- All Internal Floor Coverings
- Flyscreens to all windows & sliding doors
- Downlights & LED Electrical Package
- Concrete Allowance to Driveway, Summer Lounge/Dining & Porch
- Perry Homes "Prestige Inclusions Package"
- Site works & Basix allowance of \$35,000 **Subject to Contour Survey*



Noel Simmonds

0418 169 800

noel.simmonds@perryhomes.com.au

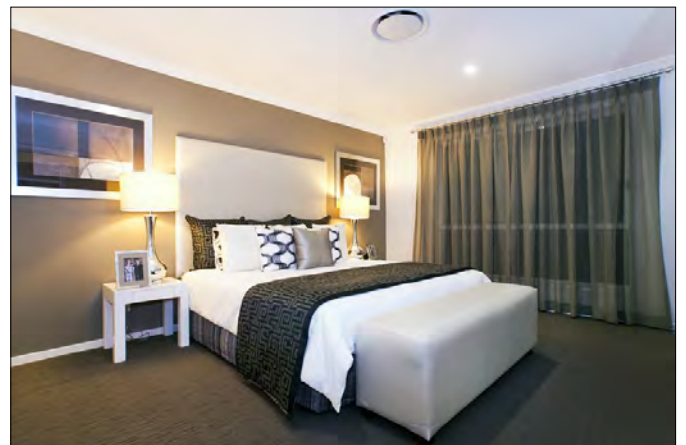
www.hunterregionhouseandland.com.au



Designer Plus façade shown, upgrades available as optional extras

Disclaimer

Due care has been taken with the siting, design and pricing of the proposed dwelling based upon current information and is correct at time of publication. This however, may change as a result of other influences such as; developer covenants, local, state or federal government requirements etc. Also, undetermined site conditions such as; tree removal, acoustics, bushfire, rock etc. may be excluded unless otherwise specified. Terms and conditions apply to campaigns and special offers. Plans and images are for illustrative purposes only and may not accurately depict the finished product. Some images may include products which are not supplied by Perry Homes and are used for display purposes only. Perry Homes (Aust) Pty Ltd. QBCC Act Lic. No.718748 NSW Lic No. 110970C



Interior image indicative only