



HOUSE AND LAND PACKAGE



LOT 2307

FISHERMANS DRIVE,
BILLY'S LOOKOUT,
TERALBA

Southport 189 | **Hamptons**



4 beds



2 baths



2 parks



20 squares



10.8m wide

LOT SIZE: 493m²

\$515,000

including land \$235,000

This house and land package includes:

- Montgomery Starter Pack Inclusions
- BASIX requirements including water tank
- Standard site costs
- Termite resistant frames and trusses
- Large double garage with remote control door

Additional Bonuses:

- Artusi stainless steel kitchen appliance package
- Three coat Premium Paint system
- Electrical provisions package
- Alfresco entertainment area
- Daikin split-system air conditioning
- Bushfire construction ready

For more information, please contact:

Thomas Wenham
0422 386 073

thomas@montgomeryhomes.com.au





Southport 189 Hamptons

montgomeryhomes.com.au



LOT 2307

FISHERMANS DRIVE,
BILLY'S LOOKOUT,
TERALBA



4 beds



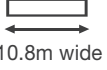
2 baths



2 parks



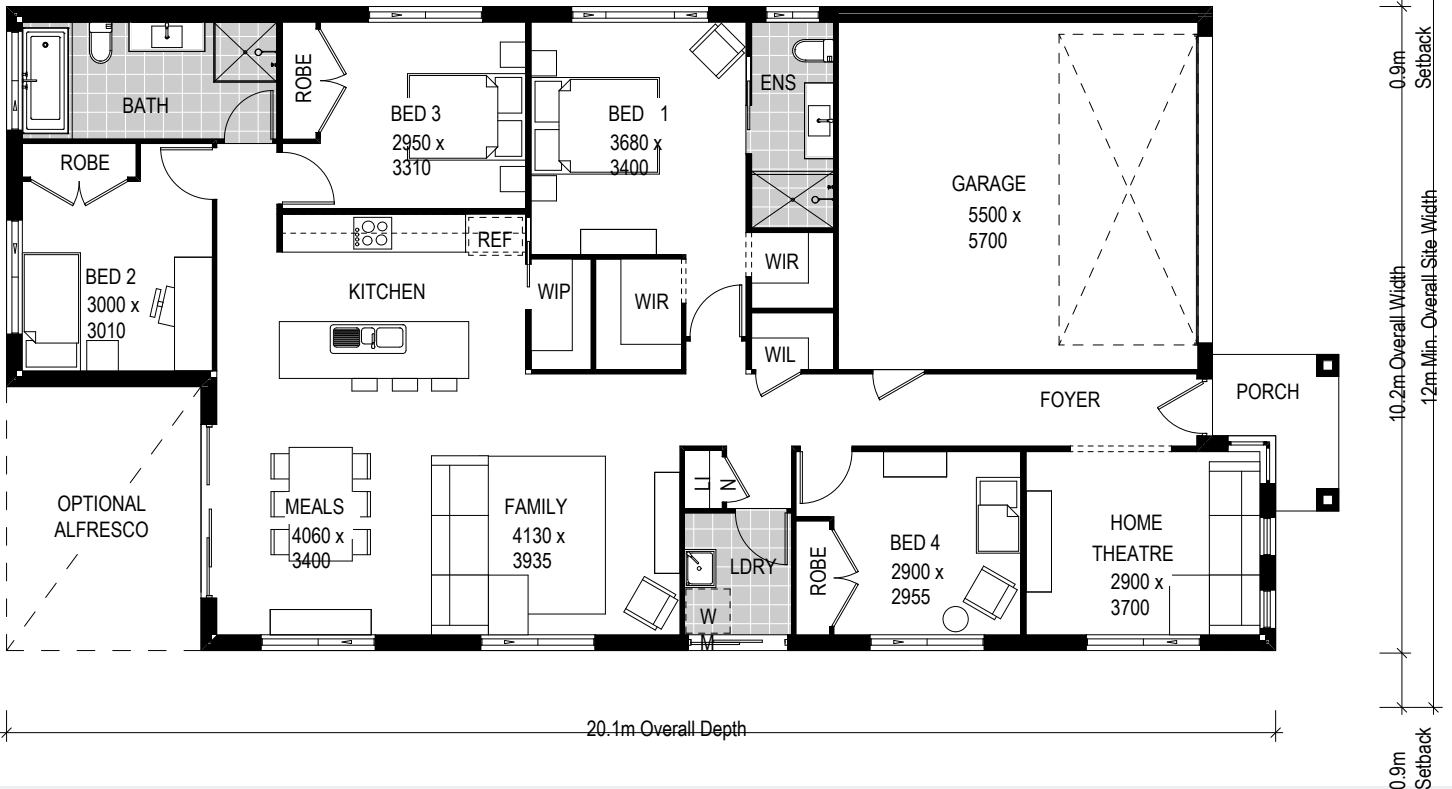
20 squares



10.8m wide

TOTAL FLOOR AREA
20.6 squares or 189m²

LOT SIZE
493m²



For more information, please contact:

Thomas Wenham
0422 386 073

thomas@montgomeryhomes.com.au

CONDITIONS APPLY Please note that this is not a final tender and Montgomery Homes reserves the right to revise plans, pricing & all specifications without obligation or notice. Pricing is subject to Council & any other statutory or regulatory authority requirements (Eg. BASIX, Mines, Bushfire etc). Designs and plans are Copyright protected and remain the property of Montgomery Homes Pty Ltd at all times. Pictures shown are for illustrative purposes only. Price excludes any external works i.e. landscaping, driveway, retaining walls & excludes floor coverings to living areas & bedrooms etc, window furnishings & light fittings.



montgomeryhomes.com.au

