



Image may depict upgrades that are not included in the pricing.

Floor area: 222.32m² / 23.93sq | Block size: 612.2m²
 Address: Lot 2321 Fishermans Drive, Teralba

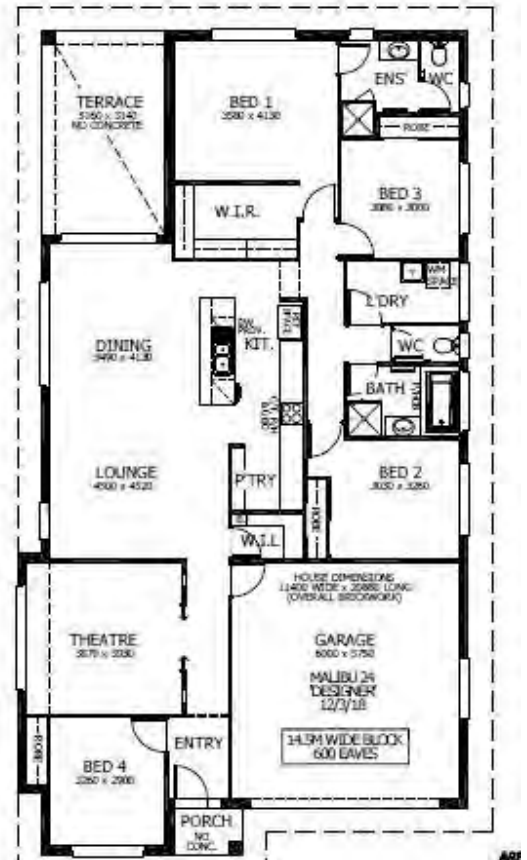


Malibu 24 Package Inclusions

* The Malibu 24 is on display at 20 Darlaston Avenue, Thornton

INCLUDED IN THIS PACKAGE AND FOR A LIMITED TIME ONLY!
 *DUCTED AIR CONDITIONING *COLORBOND® ROOF *20MM SMARTSTONE
 BENCHTOP TO KITCHEN - ALL FOR ONLY \$7,999

- * Executive Facade
- * Covered Alfresco
- * Perry Homes 'Standard Inclusions'
- * Allowance for 'Estate Guideline' requirements
- * All internal floor coverings
- * Upgraded Designer Kitchen with stainless steel appliances
- * Flyscreens to all windows and sliding doors
- * Wall mounted clothesline
- * TV antenna
- * Concrete allowance to driveway, porch and terrace
- * Allowance for BAL 19 requirements
- * Allowance for acoustic requirements
- * Site Works and BASIX allowance including Council Lodgement fee (subject to Contour Survey)



Noel Simmonds

0418 169 800

noel.simmonds@perryhomes.com.au

www.hunterregionhouseandland.com.au

Ben Hancock

0435 956 546

ben.hancock@perryhomes.com.au

www.hunterregionhouseandland.com.au



"Disclaimer: Due care has been taken with the siting, design and pricing of the proposed dwelling based upon current information and is correct at time of publication. This however, may change as a result of other influences such as; developer covenants, local, state or federal government requirements etc. Also, undetermined site conditions such as; tree removal, acoustics, bushfire, rock etc. may be excluded unless otherwise specified. Terms and conditions apply to campaigns and special offers. Plans and images are for illustrative purposes only and may depict features such as landscaping, furniture, window furnishings and lighting that are not included in the package price or which are not available from Perry Homes. Land price is correct at time of printing and subject to change without notice. Perry Homes reserve the right to withdraw this package at any time without notice. Perry Homes (Aust) Pty Ltd. QBCC Act Lic. No.718748 NSW Lic No. 110970C."