

HUNTER HOMES

live WITH HEART 



\$409,749*

MAISON FACADE

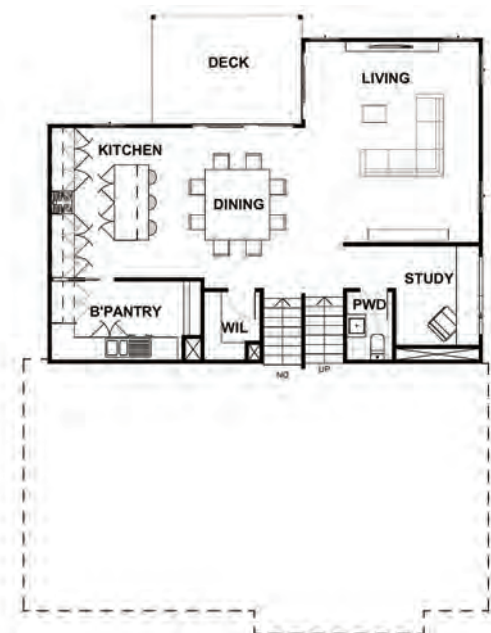
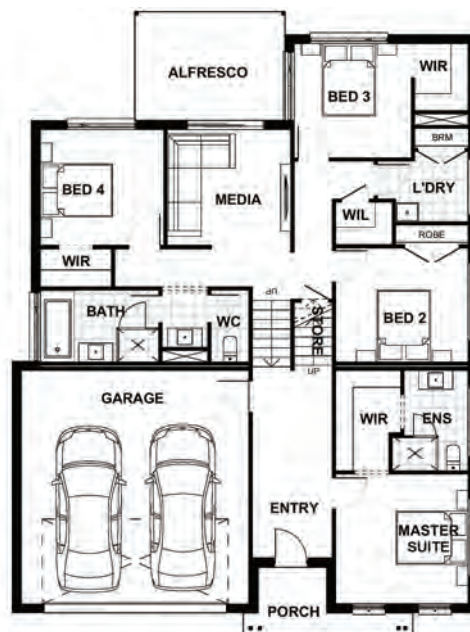
 4  2.5  2

Total (sq.s.)	29.66	Width (m)	12.26
Total (m ²)	275.5	Length (m)	16.42

Contact Lana Coleman
0447 099 292 lana@hunterhomesnsw.com

Features & Inclusions

- ✓ Carpet and Tiles throughout
- ✓ Driveway, Patio & Alfresco concrete
- ✓ Ducted Air Conditioning
- ✓ 20mm Stone Bench Tops
- ✓ 900mm Stainless Steel Appliances
- ✓ Soft Close cabinetry
- ✓ Wall Hung Vanities
- ✓ Recessed Wet Areas
- ✓ Colorbond Roof
- ✓ 3 Coat Paint System
- ✓ Downlights Included
- ✓ Standard Site costs & BASIX
- ✓ Local Builder Local trades



Terms and Conditions: Images shown on this brochure are approximate and for illustration purposes only, these plans may not be drawn to scale. Façades and other images on this brochure may be shown as optional upgrades or not included, additional fixtures and finishes that are featured on this document may not be included in the base cost such as landscaping, tiling, decking, furniture, feature lighting, pools, driveways etc. Hunter Homes reserves the right to change plans and inclusions at any time. This package is subject to council approval. All designs that are developed remain the property of Hunter Homes Pty Ltd under copyright law & we retain & claim all rights to these plans. Changing plans by 50% or more does not avoid legal responsibility for a copyright breach.

1300 BUY HOME www.hunterhomesnsw.com

House Only - Moxey 267