

# Turn-key Package

Land size 445m<sup>2</sup>  
House size 221m<sup>2</sup>

Lot 2409 **Billy's Lookout**  
**Teralba**

Images indicative only

House and Land Package

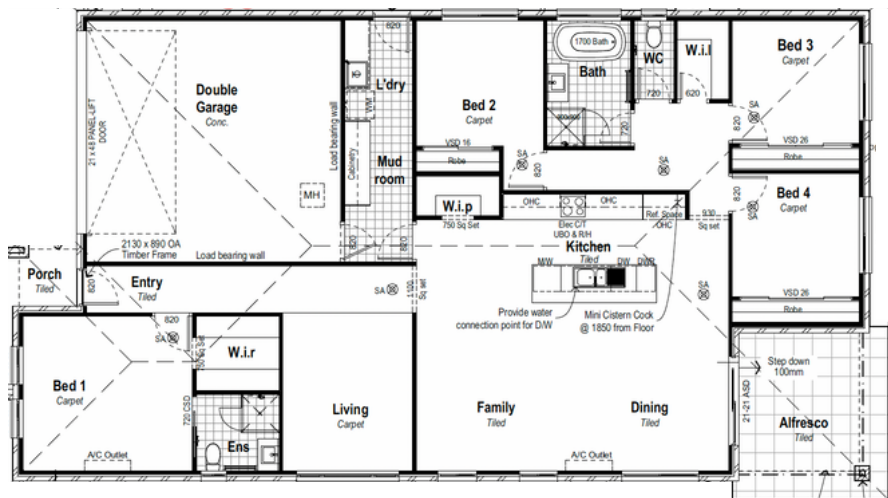
**\$920,000**

COMPLETELY TURN-KEY



## LUXURY INCLUSIONS

- Hamptons façade
- Stone benchtops in kitchen and bathroom
- Ducted air-conditioning
- 900mm oven, cooktop and rangehood
- Shower niche in ensuite
- Blinds and Downlights
- Carpet and Tiles
- Flyscreens
- Driveway, Fencing and Landscaping
- COMPLETELY finished inside and out



KERRI-ANN HOOPER

0402 107 194

sales@carnelianprojects.com.au

**Carnelian**  
PROJECTS

WORRIED ABOUT BUILDING?

I AM WITH YOU ALL THE WAY THROUGH THE BUILD PROCESS, RIGHT THROUGH TO HANDOVER