



HOME SIZE: 316.2m²

LAND SIZE: 572m²

4 - 5 | 3 | 2.5 | 2

\$1,084,385*

FIXED PRICE

HAYMAN 34 SAVILLE FACADE
 Lot 1815 Outrigger Dr, Teralba
 Land Reg. Q4 2024

UPGRADES INCLUDED

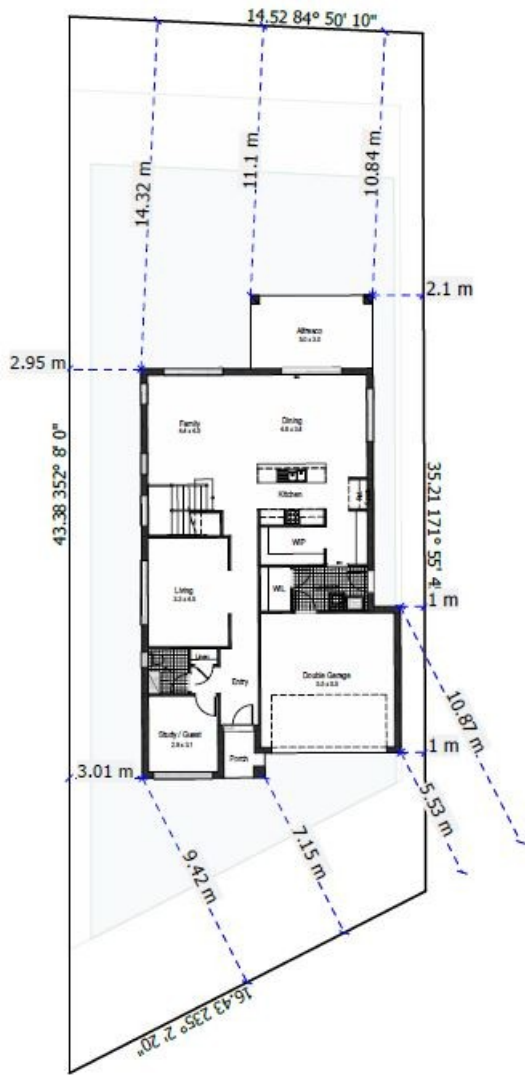
- **EOFY Savings promotion 10% off* the base price and 10% off* your facade (already applied)**
- 7 Star Basix
- 2600mm Ceiling Heights to Ground Floor
- Aspire Signature Pack
- Fully ducted air conditioning
- Site Costs
- Solar
- Hybrid Frame
- 20mm Stone benchtops to kitchen
- 900mm Smeg oven
- 900mm Smeg gas cooktop or 900mm Smeg electric cooktop (only available if gas is not available to property)
- 900mm Smeg glass canopy rangehood
- Smeg Freestanding Dishwasher
- And much, much more...



Clarendon Homes | sales@clarendon.com.au | 13 63 93

Terms and conditions: Images are provided for illustrative purposes only. Additional charges may apply where designs or facades are modified and/or floorplan options added. Land value included in the package. Clarendon Homes reserves the right to change the price without notice. Only applies to home built in NSW. E&OE. Clarendon Homes (NSW) Pty Ltd. ABN 18 003 892 706 BL 22 98 C.

Date/Time: 2/5/2024 15:18



House Length	19.79m	Total Area m²	316.17
House Width	10.60m	Total Area Squares	34.00

Clarendon Homes | sales@clarendon.com.au | 13 63 93

Terms and conditions: Images are provided for illustrative purposes only. Additional charges may apply where designs or facades are modified and/or floorplan options added. Land value included in the package. Clarendon Homes reserves the right to change the price without notice. Only applies to home built in NSW. E&OE. Clarendon Homes (NSW) Pty Ltd. ABN 18 003 892 706 BL 22 98 C.

Date/Time: 2/5/2024 15:18