

emerge
COLLECTION



LOT 1005
BILLY'S LOOKOUT
TERALBA

AVOCA 210 | MANHATTAN

 4 Beds
  2 Baths
  2 Parks
  22.6 Squares
  11.2m Wide

Land Size: 504m²

\$948,888
Including Land:
\$525,000



*Achievable
price without
sacrificing
quality*

HOUSE AND LAND PACKAGE INCLUDES:

- ✓ Designer kitchen
- ✓ Italian made appliance package Taubmans
- ✓ premium paint system Complimentary
- ✓ electrical planning
- ✓ PGH/Austral bricks and concrete roof tiles
- ✓ Insulation
- ✓ Hume front entry door
- ✓ Alfresco roof and concrete slab
- ✓ Colour-on sealed driveway
- ✓ Internal floor coverings
- ✓ Tiling to Porch and Alfresco


26
WEEK

CONTRACT
BUILD TIME

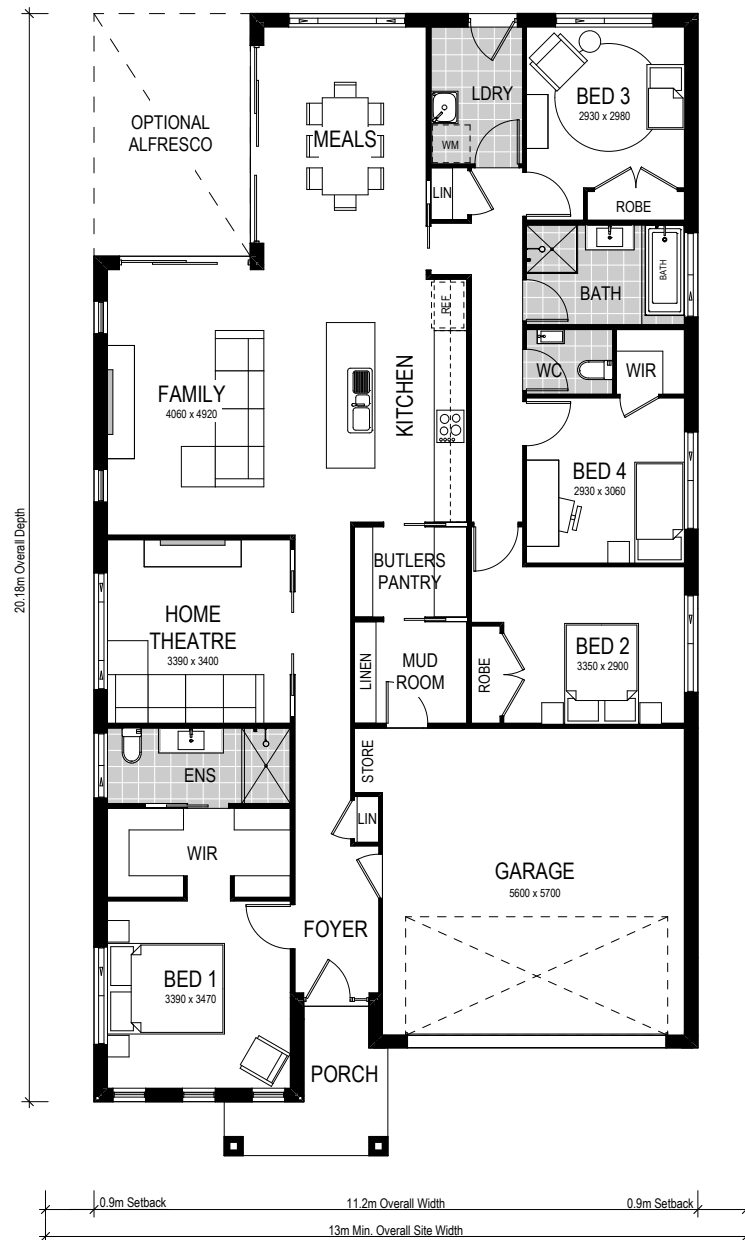
AVOCA 210 | EXECUTIVE

 4 Beds
  2 Baths
  2 Parks

This home design features four bedrooms and two living areas, including a separate home theatre room. With a secluded master bedroom with generously sized dual walk-in robes and ensuite, open plan kitchen – featuring a contemporary Butler’s Pantry, and the secondary bedrooms separate to the main living area, this home is perfect for modern family living. A highlight of this home is the modern and functional mud room which provides ingress from the garage to the Butler’s Pantry – a convenient access point for arriving home with groceries, school bags and shoes.



- ✓ Move in sooner
- ✓ Simplified selections
- ✓ Fixed site costs
- ✓ Interior and exterior inclusions
- ✓ First home buyer appeal



CONDITIONS APPLY This is not a final tender. Montgomery Homes reserves the right to revise plans, pricing and specifications without obligation or notice. Pricing is subject to Council and statutory or regulatory authority requirements (Eg. BASIX, Mines, Bushfire etc). Designs and plans are copyright protected and remain the property of Montgomery Homes Pty Ltd at all times. Images are for illustrative purposes only. Refer to Tender for pricing or inclusions/exclusions regarding external works i.e. turf, landscaping, driveway, retaining walls, and floor coverings, window furnishings, and light fittings.