

emerge
COLLECTION



LOT 1010
Cordage way
Billy's Lookout, TERALBA

SOUTHPORT 217 | METRO

 4 Beds
  2 Baths
  2 Parks
  23.3 Squares
  12.5m Wide

Land Size: 551m²

\$949,700
Including Land:
\$535,000



*Achievable
price without
sacrificing
quality*




HOUSE AND LAND PACKAGE INCLUDES:

- ✓ Designer kitchen
- ✓ Italian made appliance package
- ✓ Taubmans premium paint system
- ✓ Complimentary electrical planning
- ✓ PGH/Austral bricks and concrete roof tiles
- ✓ Insulation
- ✓ Hume front entry door
- ✓ Alfresco roof and concrete slab
- ✓ Colour-on sealed driveway
- ✓ Internal floor coverings
- ✓ Tiling to Porch and Alfresco


26
WEEK

CONTRACT
BUILD TIME

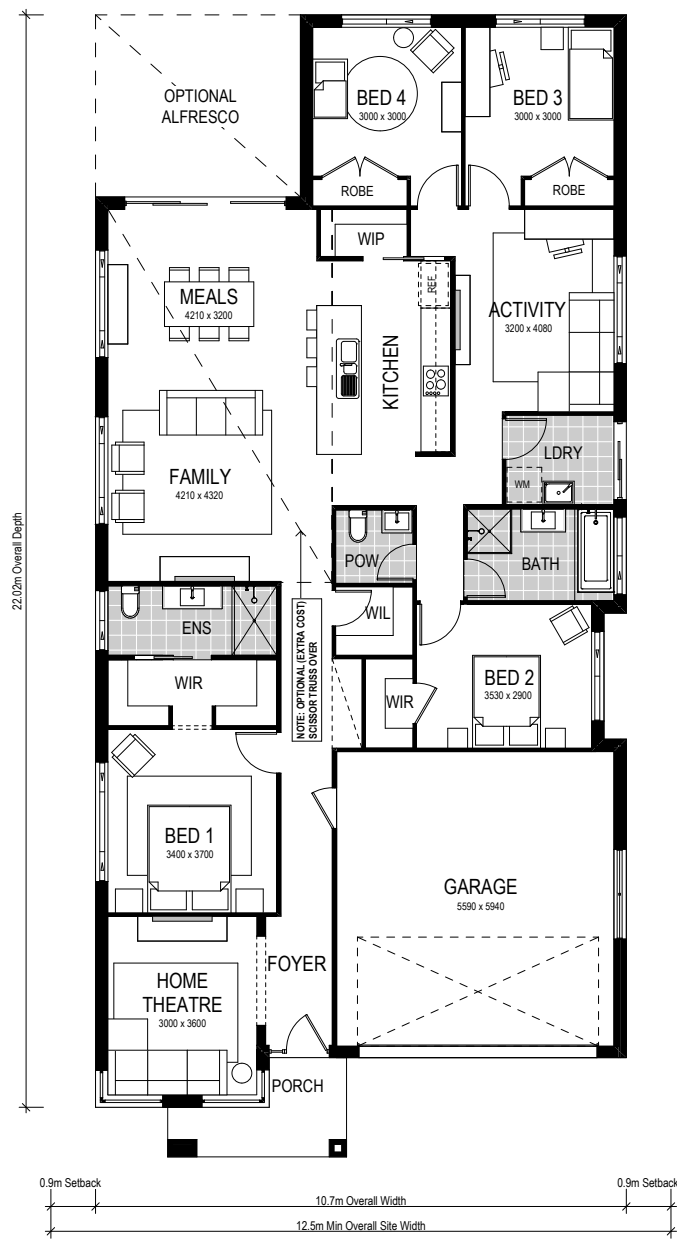
SOUTHPORT 217 | METRO

 4 Beds
  2 Baths
  2 Parks

The Southport 217 is a great home for families that need space and all the mod-cons on a single level. Two of the four bedrooms in this home adjoin the rumpus/activity room creating a space separate to the main living area for your family to spend time. The master bedroom is removed from the busiest part of the home with a set-back entrance for maximum privacy. The kitchen features a stylish island bench and walk-in pantry. Consider creating extra space with an optional raked ceiling in the living area to further enhance your ceiling height and sense of light.



- ✓ Move in sooner
- ✓ Simplified selections
- ✓ Site costs included
- ✓ Interior and exterior inclusions
- ✓ First home buyer appeal



CONDITIONS APPLY This is not a final tender. Montgomery Homes reserves the right to revise plans, pricing and specifications without obligation or notice. Pricing is subject to Council and statutory or regulatory authority requirements (Eg. BASIX, Mines, Bushfire etc). Designs and plans are copyright protected and remain the property of Montgomery Homes Pty Ltd at all times. Images are for illustrative purposes only. Refer to Tender for pricing or inclusions/exclusions regarding external works i.e. turf, landscaping, driveway, retaining walls, and floor coverings, window furnishings, and light fittings.