

*emerge*  
COLLECTION



**LOT 1008**  
**BILLY'S LOOKOUT**  
**TERALBA**

**AVALON 220 | EXECUTIVE**

 4 Beds  
  2 Baths  
  2 Parks  
  23.7 Squares  
  12.37m Wide

Land Size: 599m<sup>2</sup>

**\$970,888**  
Including Land:  
\$540,000



*Achievable  
price without  
sacrificing  
quality*

### HOUSE AND LAND PACKAGE INCLUDES:

- ✓ Designer kitchen
- ✓ Italian made appliance package
- ✓ Taubmans premium paint system
- ✓ Complimentary electrical planning
- ✓ PGH/Austral bricks and concrete roof tiles
- ✓ Insulation
- ✓ Hume front entry door
- ✓ Alfresco roof and concrete slab
- ✓ Colour-on sealed driveway
- ✓ Internal floor coverings
- ✓ Tiling to Porch and Alfresco

**26**  
WEEK

**CONTRACT**  
BUILD TIME

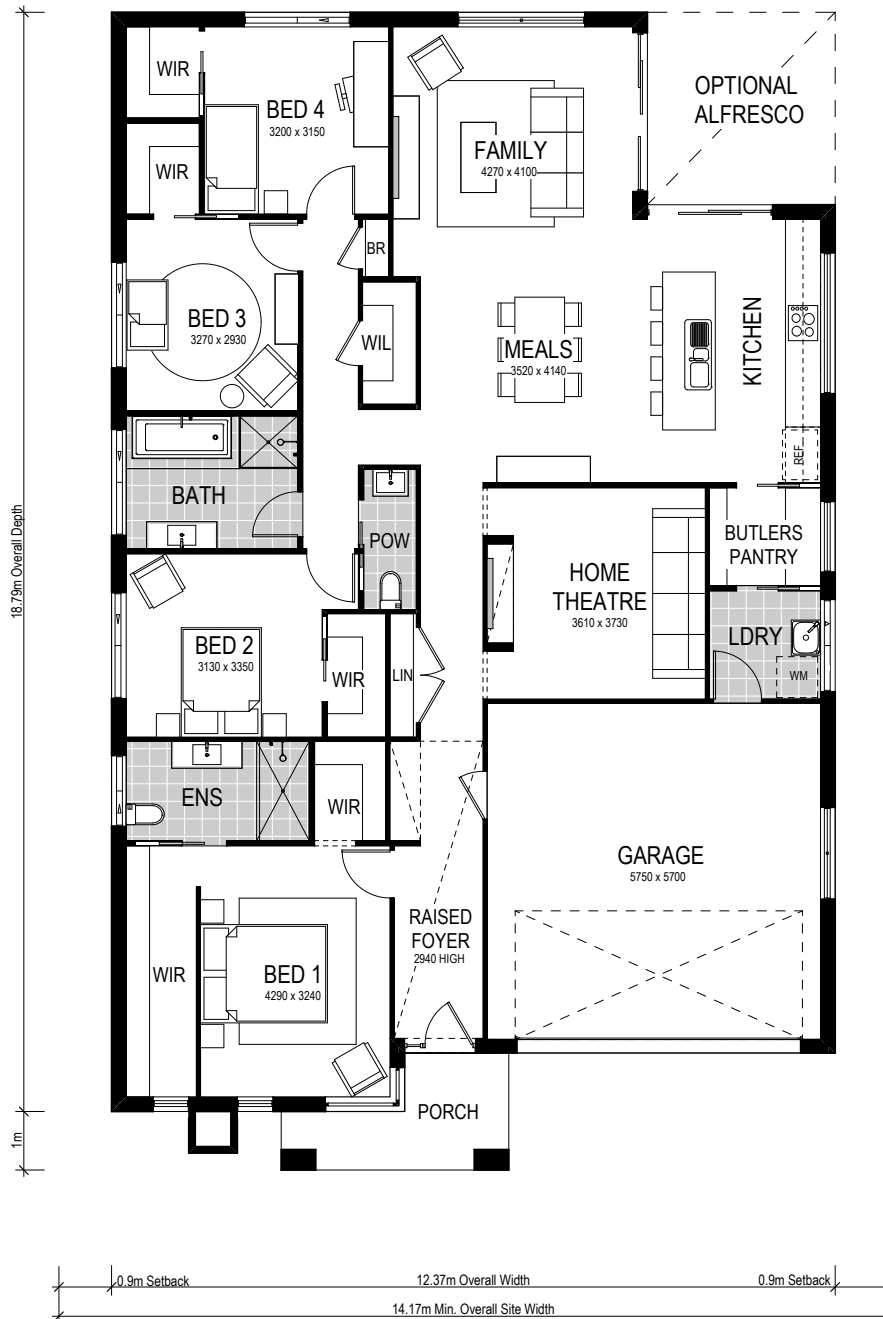
# AVALON 220 | EXECUTIVE

 4 Beds
  2 Baths
  2 Parks

This home design features two living areas, including a separate home theatre, and four sizeable bedrooms (each with a walk-in-robe). Cleverly included is a highly sought-after Butler's Pantry alongside the laundry which provides ingress from the garage to the kitchen.



- ✓ Move in sooner
- ✓ Simplified selections
- ✓ Fixed site costs
- ✓ Interior and exterior inclusions
- ✓ First home buyer appeal



**CONDITIONS APPLY** This is not a final tender. Montgomery Homes reserves the right to revise plans, pricing and specifications without obligation or notice. Pricing is subject to Council and statutory or regulatory authority requirements (Eg. BASIX, Mines, Bushfire etc). Designs and plans are copyright protected and remain the property of Montgomery Homes Pty Ltd at all times. Images are for illustrative purposes only. Refer to Tender for pricing or inclusions/exclusions regarding external works i.e. turf, landscaping, driveway, retaining walls, and floor coverings, window furnishings, and light fittings.