



**Inspired Collections**

Over 100 additional items included

Image may depict upgrades that are not included in the pricing - Hamptons facade shown.

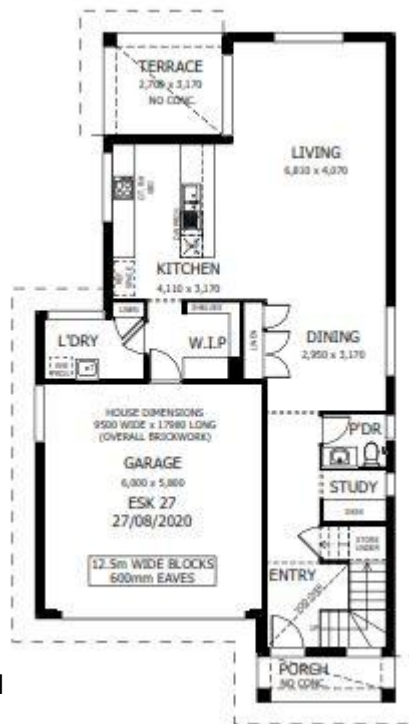
Floor area: 247.91m<sup>2</sup> / 26.68sq | Block Size: 544m<sup>2</sup>

Address: Lot 1012 Cordage Way, Teralba



## Esk 27 Package Inclusions

- \* DREAM HOME DEAL
- \* 26 WEEK BUILD TIME GUARANTEE
- \* 12 MONTH FIXED PRICE CONTRACT
- \* Standard facade
- \* Perry Homes 'Standard Inclusions'
- \* Covered Alfresco
- \* Colorbond Roof
- \* Sustainability Collection
- \* 2590mm ceiling height
- \* Fully Ducted Air Conditioning (Incl. in promotion)
- \* 'Inspired by You' upgrades (Incl. in promotion)
- \* All internal floor coverings
- \* Flyscreens to all windows and sliding doors
- \* Wall mounted clothesline
- \* TV antenna and Letterbox
- \* Concrete allowance to driveway, porch & terrace
- \* Allowance for BAL 12.5 requirements
- \* Site Works and BASIX allowance including Council lodgement (subject to Contour Survey)



Noel Simmonds

0418 169 800

[noel.simmonds@perryhomes.com.au](mailto:noel.simmonds@perryhomes.com.au)

[www.hunterregionhouseandland.com.au](http://www.hunterregionhouseandland.com.au)

